

# NEWSLETTER

## President's Message

Are you a skier? I am, well used to be...Winnipeg WAS a place famous for its 'dry cold'. Sigh. Now on to the business at hand...



Many thanks to:

- **Natalie and her crew** at our new home, the Archwood Community Centre. Our arrangement seems to be working out well, and I hear from Natalie that they are happy to have us too.
- **Our terrific Exhibition Committee**, under the leadership of Committee Chair Nicholas Burns. We are looking forward to another exciting show this spring.
- **Our tireless Model Convenors, and our Club Executive**, including continuing Treasurer Jean Gallagher, as well as, sadly, our outgoing Executive members: Kathleen Black, as Vice-Pres; and our wonderful Recording Secretary, Linda Olzewski -- we will miss you on the Exec but we are happy to know you are still part of our venerable Club.
- **Angela Lillico** for your service over the years as Social Committee chair. We will miss Angela and wish her the best in her burgeoning art career.

-Thomas Steur



Save the Date!

### 2024 ANNUAL JURIED EXHIBITION

Official Opening

PAVILION AT  
ASSINIBOINE PARK  
2nd floor, Community Gallery  
March 10, 2-4 pm

For more details see page 3

## 2024 Winnipeg Sketch Club Annual General Meeting

Our **WSC Annual General Meeting** was held on Sunday 4th February at the Archwood. Sorry if you missed it. There was coffee, cookies, and draws for some fantabulous door prizes culled from the Archives.

The biggest news: We heard a review of our financial situation, and in consideration of our position and the price of renting our new place, we will unfortunately have to raise membership dues for the second year running. (In case you wondered, the old place was going to double our rent anyway, so it works out the same.) A motion was carried that as of 2025, our annual membership dues be increased \$100 for the year. When one considers all that our Club offers, we believe this is still a bargain.

A vote was held, as per our Constitution, and your new 2024 Executive is:

**Treasurer:** Jean Gallagher, for another year, bless her soul.

**Recording Secretary:** Dan Bulloch - thank you so much for volunteering, Dan.

**Model Conveners continuing:** Rob Sim and Mike Weretyk - thank you guys.

We don't seem to have a Vice-President this year, but we will have a Member at Large and Exhibition Committee Chair Nicholas Burns, who brings with him considerable energy and new ideas. Good to have you at large, Nicholas.

No one challenged yours truly for President. I take it then that I will continue in this job for the foreseeable future. No, the election was not stolen.

We are, however, still in need of a Vice President, or at least someone to help coordinate membership and respond to new inquiries. IF YOU HAVE A FEW MINUTES TO SPARE once or twice a week to do some email and check names on lists, please please please get back to us!



**Did I mention our meetings are really fun? They are!**



If you're in need of a mid-winter chuckle, check out Mr. Bean in this classic video from the early '90s:

[Mr. Bean Goes To A Life Drawing Class](#)

## The 105th Annual Juried Exhibition

Our 105th Annual Juried Exhibition will be held at the Pavilion Gallery from 1 March til 26 May.  
Annual Juried Exhibition Details

Artwork is to be framed, labelled and ready for hanging with a wire. Please see Call for Submissions for details.

All work submitted must be original, must not be more than three years old, and must not have been included in previous WSC Annual Juried Exhibitions. Any work submitted that does not meet these requirements will be not be accepted. Please see Call for Submissions for details.

Jurying Drop off is 10:00am-12pm, Friday March 1st to 2nd Floor of the Pavilion at Assiniboine Park in the Community Gallery. If your piece/s has/have been Juried into the Exhibition, installation in the gallery will take place Saturday March 2nd. If your piece/s have not been juried in we will contact you to pick up the work that day between 3 and 4:00pm

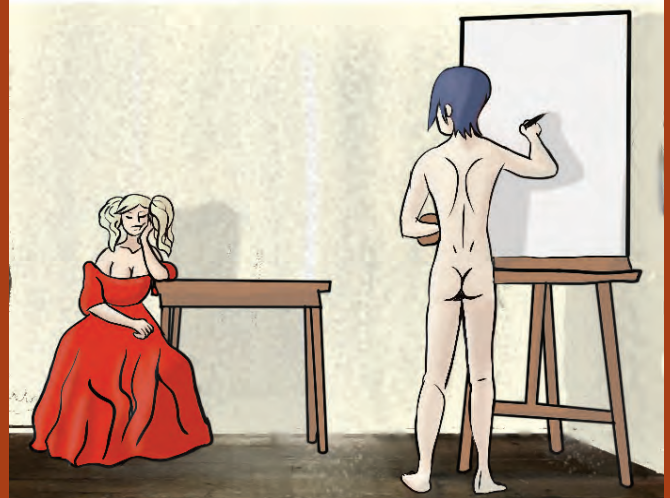
Official Opening of the Exhibit and Awards presentation to take place Sunday March 10, 2-4pm.

De-install will take place Monday, May 27th. Artwork is to be picked up between 12 Noon and 2:00.

### **Do You Have any Clothed Friends?**

Our tireless Model Convenors have let us know that we are running short of clothed portrait models in the springtime. If you know of friends, neighbours, or acquaintances who would be willing to sit still for two hours on a Monday evening, in 20 minute stretches with breaks, please ask them to get in touch with me or Rob or Mike. We pay!

Painter: Are you comfortable with nudity?  
Model: Umm, I guess so  
Painter: Excellent



## EVENTS & EXHIBITS TO CHECK OUT



### Local Events:

To view what's happening in the Exchange on March 1st for First Fridays, check out the link below. The events are updated regularly, so be sure to visit the page before you head out to enjoy the evening. You don't want to miss anything.

<https://www.firstfridayswinnipeg.org/whats-on-128165march-1.html>

Also, check here for details about the Art Talk/ Art Walk monthly events. This is typically an informal, moderated artist talk lasting less than an hour, followed by a guided tour.

<https://www.firstfridayswinnipeg.org/art-talkart-walk.html>

### REMINDER from the President:

Annual Dues need to be paid up by the 1st of March at the latest. If you plan on submitting to the Annual Juried Exhibition this week, you must be a Member in Good Standing, i.e., have paid any Exhibition Fee(s) for your submissions, but also your Annual Dues, \$85 this year. After that, my trusty hound and I will start hounding you.

Seriously...



### Virtual Exhibits

Let's honour women artists on March 8, International Women's Day.

#### National Museum of Women in the Arts

There are many excellent online exhibits currently, so check out the link.

<https://nmwa.org/whats-on/exhibitions/online/>

#### Muscarelle Museum of Art Women with Vision

This was an exhibition from 2018 in anticipation of the 100-year anniversary of the first women students admitted to the College of William & Mary. It features art from 1655 to 2017 by more than 30 women. Take a virtual tour through the collection here:

<https://muscarelle.wm.edu/virtual/www/>

Not here until May, but worth noting:

#### Smithsonian:

#### Subversive, Skilled, Sublime: Fiber Art by Women

May 31, 2024 - January 5, 2025

Cotton, wool, polyester, silk—fiber is felt in every aspect of our lives and has long inspired women artists. This digital project highlights the work of eight artists.

<https://www.aaa.si.edu/exhibitions/women-in-fiber>

*Please be sure to let us know if you have exhibits coming up. Also, we'd love to have some work from sketch nights to add to the newsletter!*